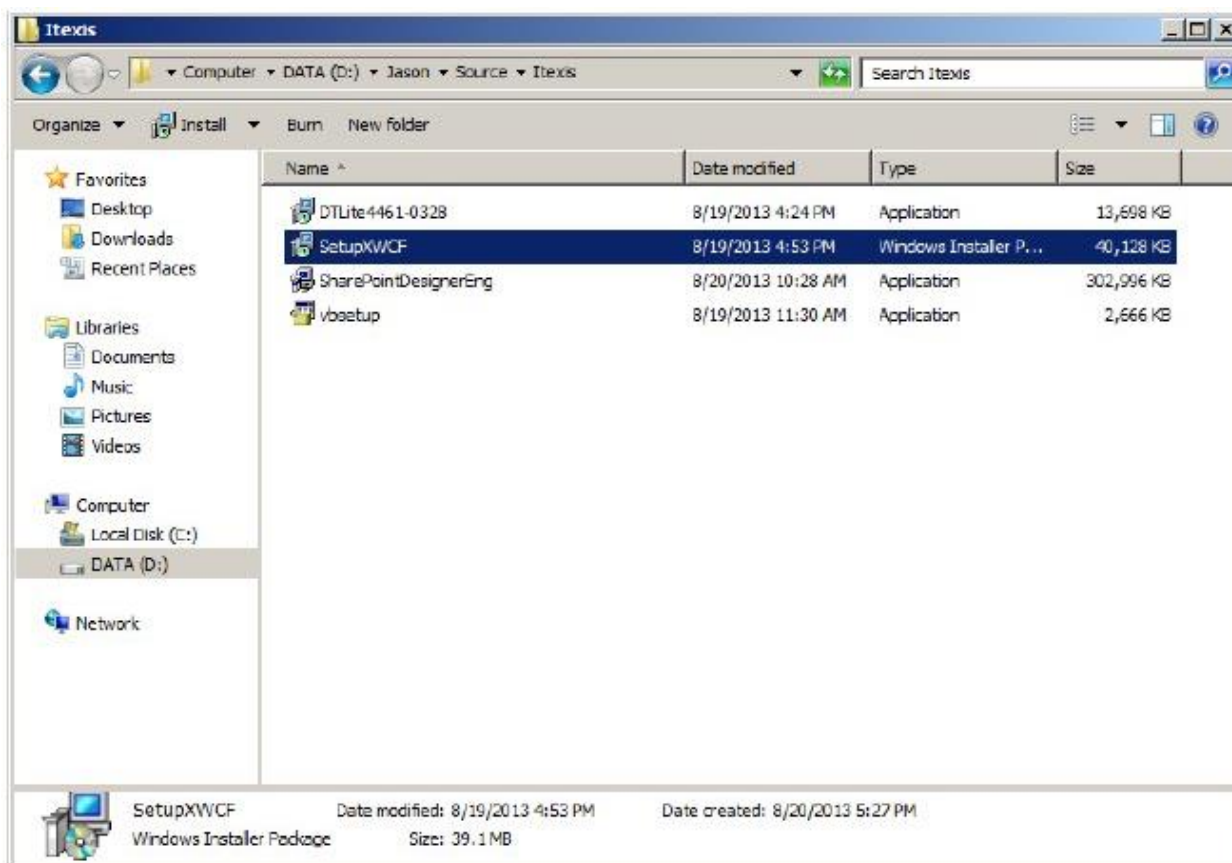
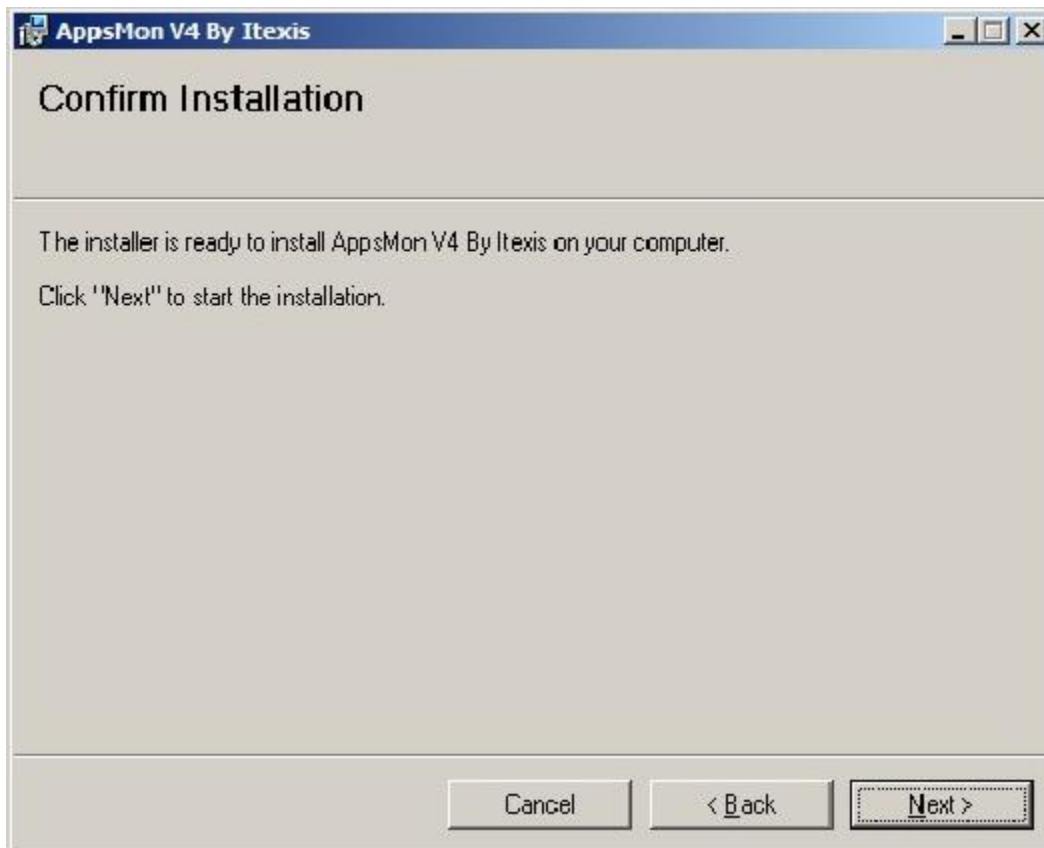
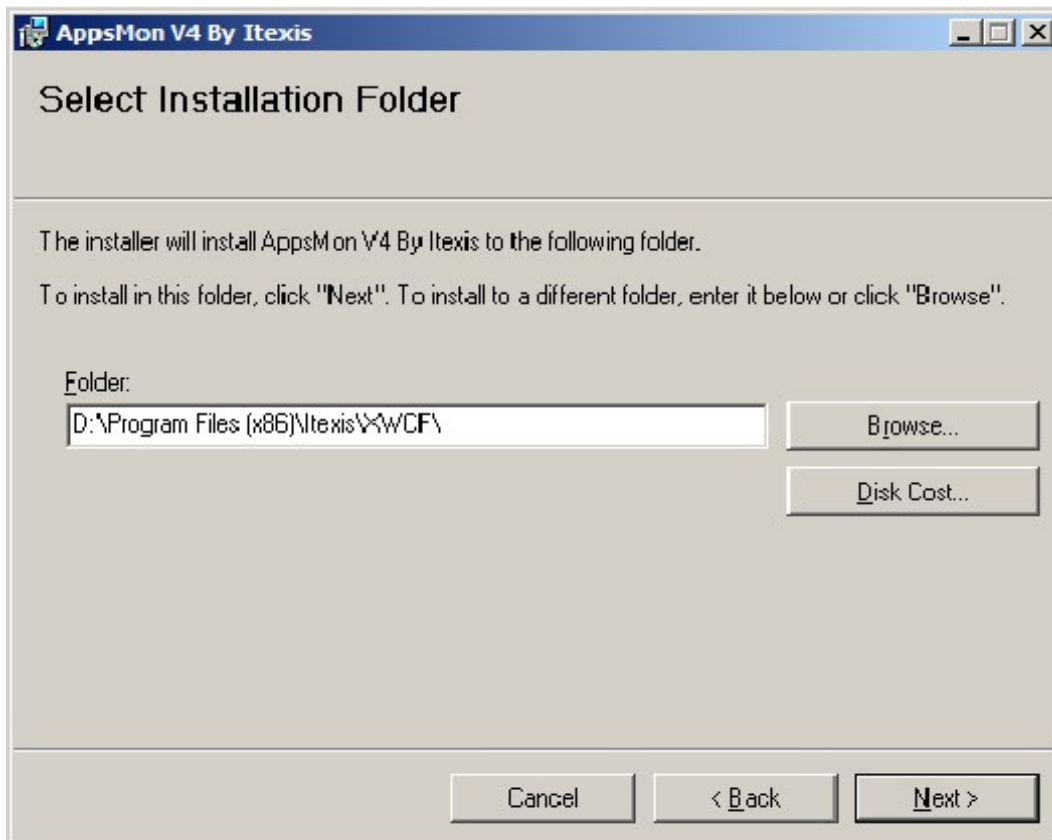


AppsMon installation Procedure





AppsMon V4 By Itexis

License Agreement



Please take a moment to read the license agreement now. If you accept the terms below, click "I Agree", then "Next". Otherwise click "Cancel".

END USER LICENSE AGREEMENT for AppsMon for Windows

ITEXIS, the Company, gives you a non-exclusive license to use AppsMon for Windows, the Software.

☐ I Do Not Agree ☒ **I Agree**

Cancel < Back Next >

Machine Configuration

Machine

Description :

Machine-1

Group

-DEFAULT-

☒ Parent machine

☐ Child machine of ...

Key (M1, M2, M3, ...):

M1

User AutoLogon

Default Login :

Password :

☒ Encrypt Password

Domain :

☒ Session in Startup ☐ User Autologout

☐ Enable Autologon in registry

Hook Session Password

seven

Validate

